

**DESCRIZIONE**

**CHIUSURA A IMPRONTA "TAGLIO CACCIAVITE"**

**DOTAZIONE STANDARD**

**TIPOLOGIA:**  
- Chiusura a impronta

**MATERIALE:**  
- Metallo pressofuso

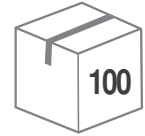
**FINITURA:**  
- Nichelata

- Leva Q7 int. 43  
- Forcella

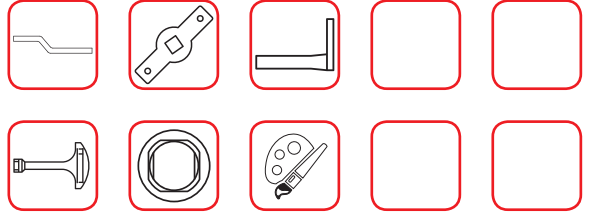


MADE IN ITALY

CONFEZIONE

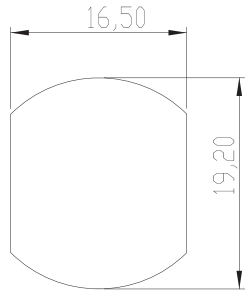


OPTIONAL

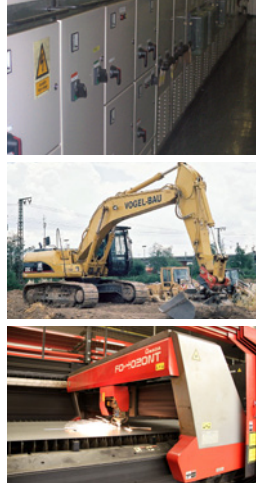


Ø	L	CODICE	NOTE
19	20	165559	90°, impronta TC, forcella pos. 1, 2, 5, 6, 9, 10
19	20	165560	90°, impronta TC, forcella pos. 3, 4, 7, 8, 11, 12

DIMA DI FORATURA



ESEMPIO DI APPLICAZIONI



Apertura mediante cacciavite



**DISEGNO TECNICO**

