

DESCRIZIONE

CREMONESE A 2 PUNTI

DOTAZIONE STANDARD

TIPOLOGIA:

- A lamelle

- 2 chiavi in ottone SCHG05082

MATERIALE:

- Basetta: plastica nera
- Cilindro: metallo pressofuso

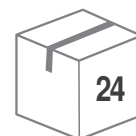
FINITURA:

- Nichelata



MADE IN ITALY

CONFEZIONE



OPTIONAL



K A

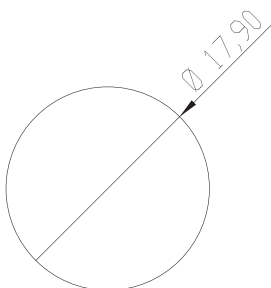


PASS

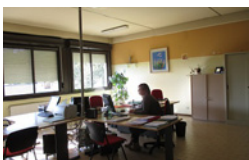
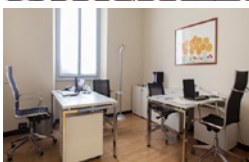
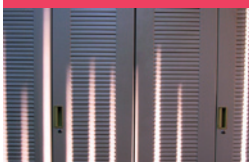


Ø	L	CODICE	NOTE
17	25	240251	chiusura verticale
17	25	240350	chiusura orizzontale

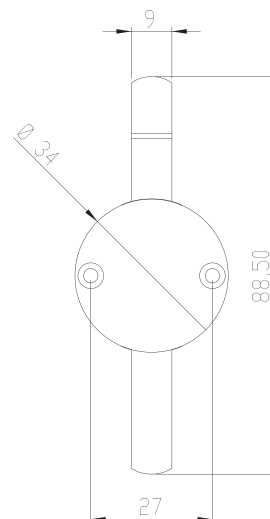
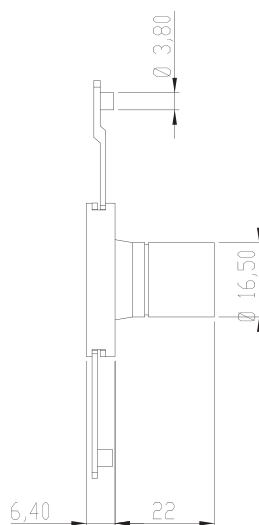
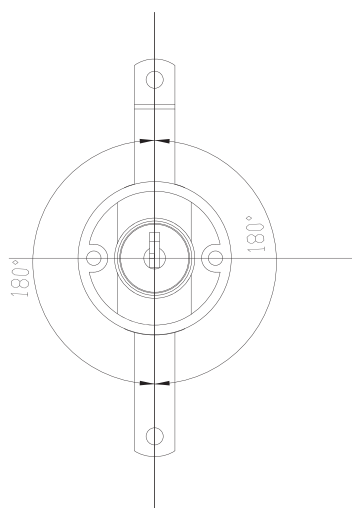
DIMA DI FORATURA



ESEMPIO DI APPLICAZIONI



DISEGNO TECNICO

PER PORTE A
BATTENTE