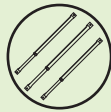


ACCESSORI\* / ACCESSORIES\*



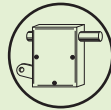
Pagina  
T.2  
Page



Pagina  
U.1  
Page



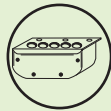
Pagina  
U.2  
Page



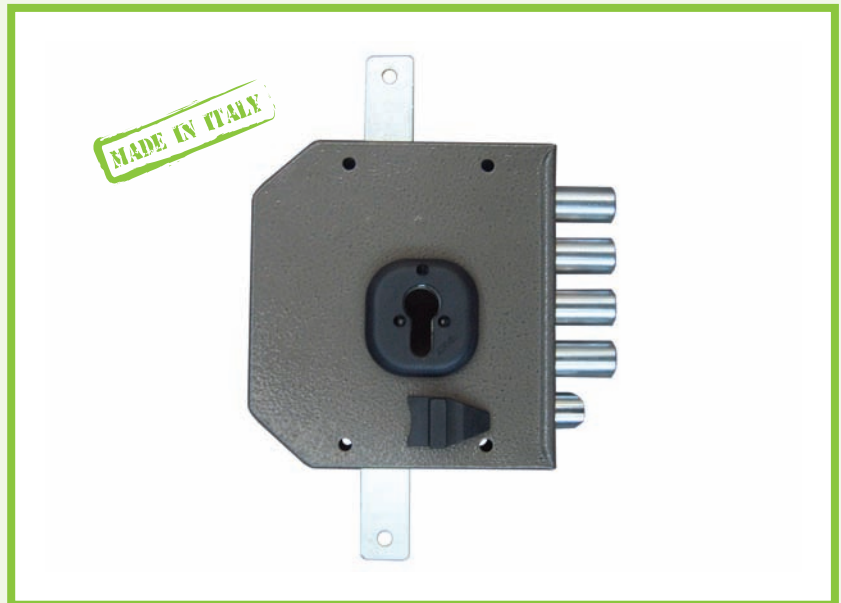
Pagina  
U.4  
Page



Pagina  
U.4  
Page



Pagina  
U.5  
Page



SERRATURA AD APPLICARE PER  
CILINDRO A PROFILO EUROPEO

TIPOLOGIA:

- Chiusura triplice, predisposta per cilindro a profilo europeo

TRATTAMENTO STANDARD:

- Martellata marrone

CARATTERISTICHE:

- 2 mandate
- Piastra interna antitrapano

RIFERIMENTI TECNICI:

- Corsa chiavistelli: 29 mm
- Corsa aste: 18 mm

DOTAZIONE STANDARD:

- Portacilindro di sicurezza
- Mostrina interna in plastica
- Ferrogliera bassa
- Viteria di fissaggio

NOTE:

- Intercambiabile con i principali marchi presenti sul mercato

EUROPROFILE RIM LOCK

TYPE:

- Three-locking points, euro-profile rim lock

TREATMENT:

- Brown enamelled

CHARACTERISTICS:

- 2 turns
- Antidrilling internal plate

TECHNICAL DETAILS:

- Deadbolt travel: 29 mm
- Bars tavel: 18 mm

TECHNICAL DETAILS:

- Security cylinder device
- Internal plastic escutcheon
- Standard strike
- Screws and parts

NOTES:

- Compatible with most common brands on the market

EXTRA / EXTRA

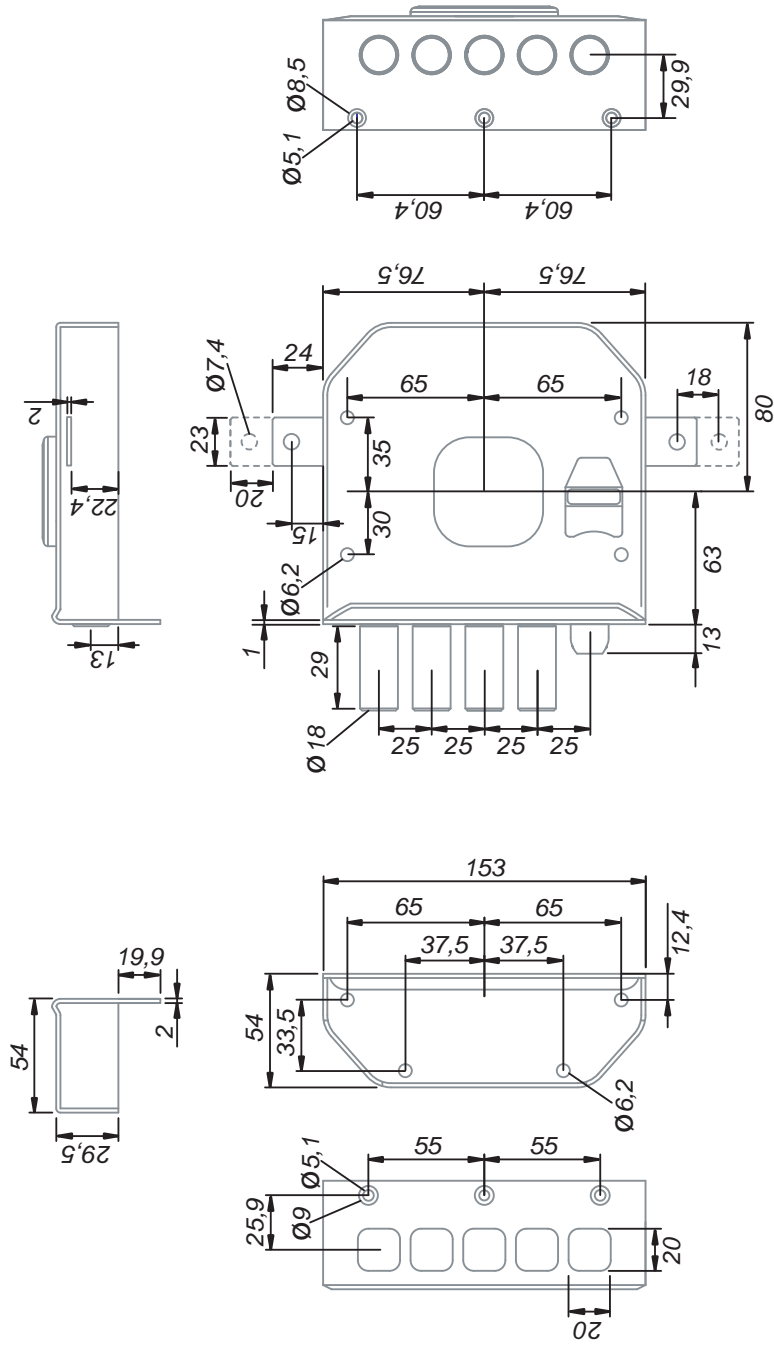
Trattamento di cromatura, doratura e vernici a richiesta.

Chrome and golden coating, special varnishing on demand.

PARTICOLARITA' TECNICHE / TECHNICAL PARTICULARITY



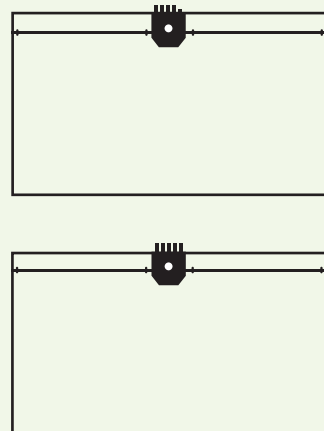
\* Dettagli tecnici nella sezione "U - ACCESSORI MOIA". / Technical details in "U - MOIA ACCESSORIES" section.



1/2 GIRO	CODICE	NOTE
no	G453	
si	G454	

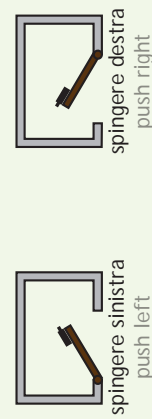
LATCH	CODICE	NOTE
no	G453	
si	G454	

**MONTAGGIO / ASSEMBLY**



senza scocco  
without latchbolt

con scocco  
with latchbolt



spingere sinistra  
push left

spingere destra  
push right

tirare sinistra  
pull left

tirare destra  
pull right