

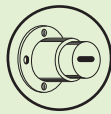
ACCESSORI* / ACCESSORIES*



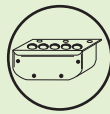
Pagina
U.2
Page



Pagina
U.2
Page



Pagina
U.3
Page



Pagina
U.5
Page



SERRATURA A DOPPIA MAPPA

CODICE:

- Vedi retro pagina.

TIPOLOGIA:

- Chiusura laterale a ferroglietto, con chiave doppia mappa asimetrica.

TRATTAMENTO STANDARD:

- Martellata marrone.

CARATTERISTICHE:

- 5 gorges incostanti.
- 4 mandate.

RIFERIMENTI TECNICI:

- Corsa chiavistello: mm 40.

DOTAZIONE STANDARD:

- 3 chiavi da 110 mm.
- Placchetta esterna in ottone lucido.
- Viteria di fissaggio.

NOTE:

- Ambidestra, senza scrocco.
- Comando interno con chiave.

DOUBLE-BITTED LOCK

CODE:

- See overleaf.

TIPOLOGY:

- Side latch, with asymmetrical double bit key.

STANDARD TREATMENT:

- Brown enamelled.

CHARACTERISTICS:

- 5 incostant levers.
- 4 throws.

TECHNICAL DETAILS:

- Dead bolt travel: 40 mm.

EQUIPMENT:

- 3 key mm 100.
- External brass escutcheon.
- Screws and parts.

NOTES:

- Reversible, without latch-bolt.
- Internal opening with key.

EXTRA / EXTRA

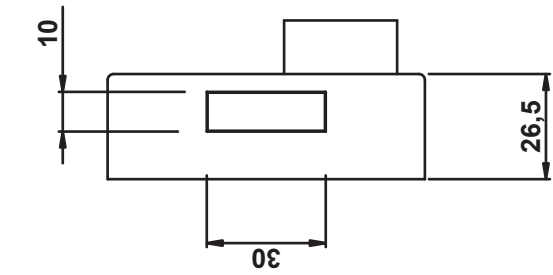
- Trattamento di bronzatura, cromatura, doratura, vernici a richiesta.

- Bronze, chrome and golden coating.

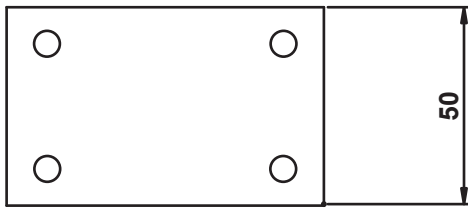
PARTICOLARITA' TECNICHE / TECHNICAL PARTICULARITY



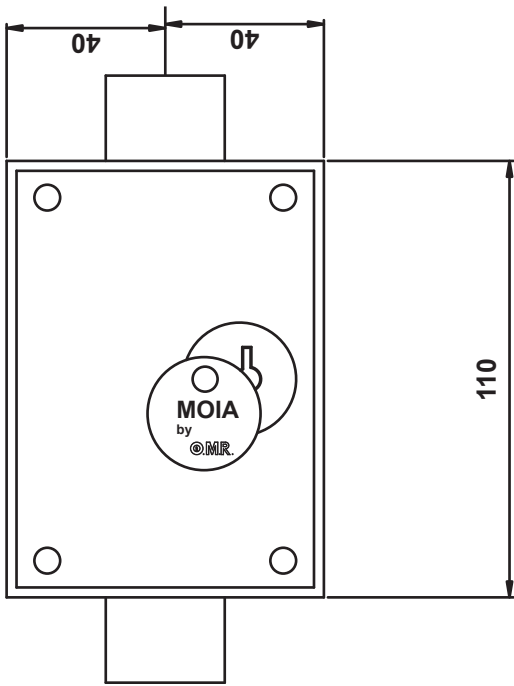
* Dettagli tecnici nella sezione "U - ACCESSORI MOIA". / Technical details in "U - MOIA ACCESSORIES" section.



FERROGLIERA
STRIKE



SERRATURA
LOCK



SCROCCO CODICE NOTE

310	Asimmetrica

SPRINGL. CODE NOTES

310	Asymmetrical

MONTAGGIO / ASSEMBLY

